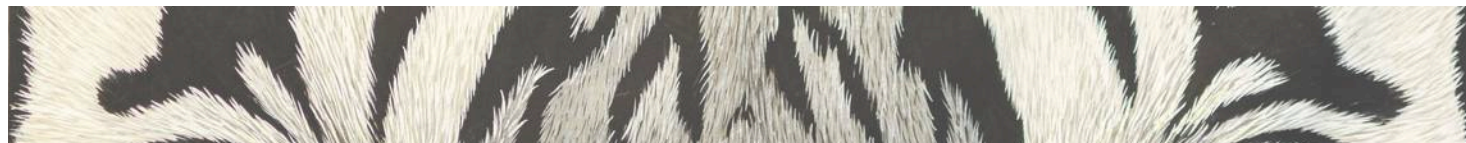


# Silent Conversation

From Margins to the Centre



# Art Catalogue



The exhibition series

## Silent Conversation

The enduring relationship between tribal communities, forest dwellers and  
Mother Nature

**Silent Conversation: From Margins to the Centre** is an art exhibition dedicated to showcasing the enduring connection between tribal communities, forest dwellers, and the Mother Nature. It highlights the symbiotic relationship these communities share with forests, wildlife, and protected landscapes, presenting their unique perspective on nature's cycles and the ecosystems they protect.

In its second edition, the exhibition showcases India's treasured landscapes—national parks, wildlife sanctuaries, and community reserves. The featured artforms, crafted by tribal artisans, encapsulate the essence of their natural surroundings and cultural heritage. This initiative not only aims to promote these artforms but also to provide a sustainable source of income for the artisans, giving them the recognition they deserve. Additionally, the exhibition will include cultural performances that further showcase the rich traditions of these communities.

Organised by the Sankala Foundation, in collaboration with the National Tiger Conservation Authority (NTCA), this edition of the exhibition strengthens its mission to create a broader impact, enhancing the footprint of tribal art and livelihoods.

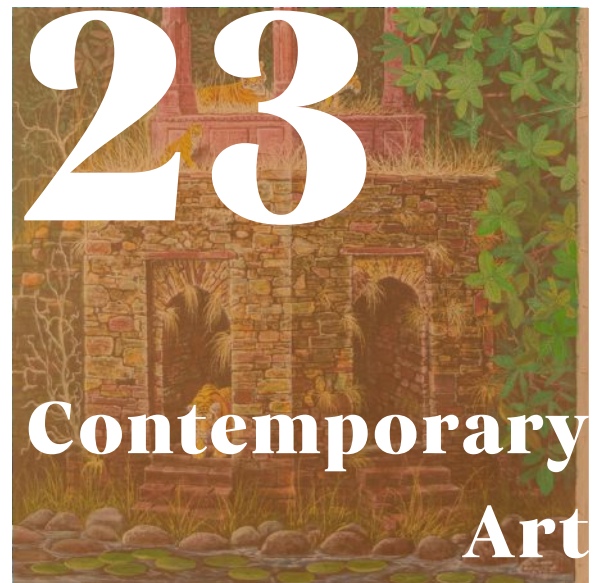
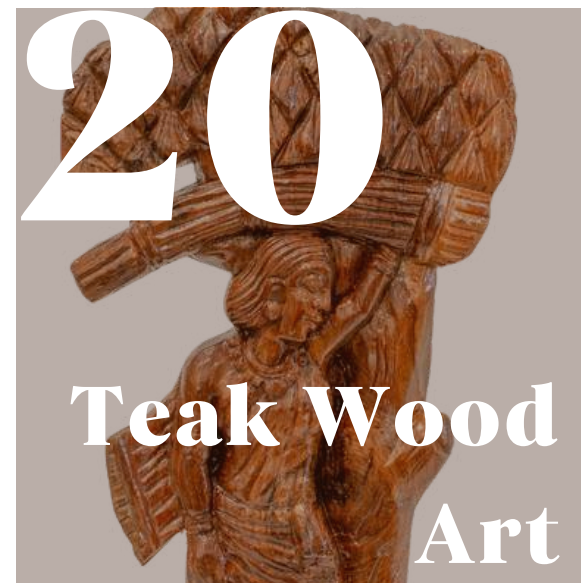
**Date:** 17th - 20th October, 2024

**Time:** 11 AM - 7 PM

**Venue:** India Habitat Centre,  
New Delhi



# Contents

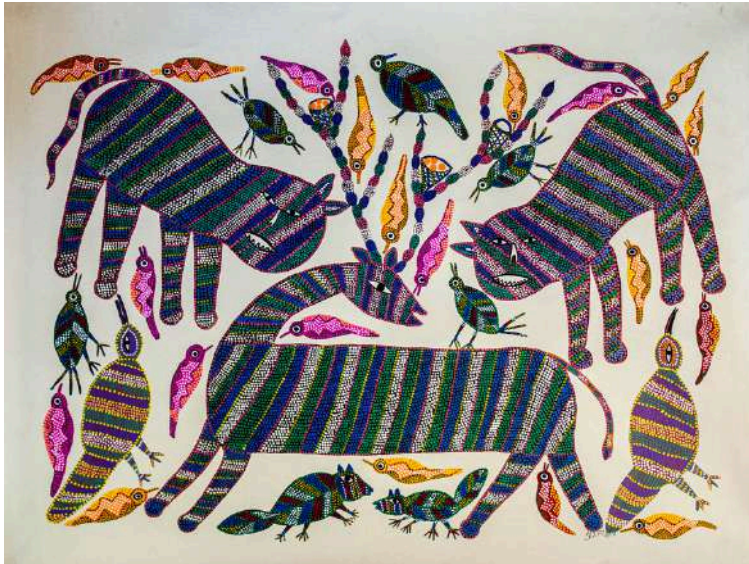


**36**

**Price List**

# Bhil Art

It is a vibrant tribal art style from central India, is known for its intricate dot paintings and its bold, earthy colors. Bhil artists traditionally depict daily life events, nature, and mythological stories. These artworks often feature animals, trees, and deities, blending folklore with a deep connection to the land. Passed down through generations, Bhil art is a celebration of the community's cultural heritage and close relationship with the natural world.



ASU\_001 | **Connected for survival**

**Subhash Amliyar**

26" x 35"

Acrylic on canvas

The painting shows a number of animals connected in one way or the other, referring to the interdependence of species necessary for their survival.



ASU\_002

**Feline  
renaissance**

**Subhash Amliyar**

37" x 48"

Acrylic on canvas

The painting depicts a number of cats, possibly referring to the increasing tiger population in India.



ASU\_004

**Tree of Life**

**Subhash Amliyar**

26" x 37"

Acrylic on canvas

The painting shows a tree of life supporting various species on it such as birds and deer.

# Gond Art

Gond art is a traditional painting style of the Baiga and Gond tribal community in central India, particularly the states of Maharashtra and Madhya Pradesh. It is characterised by intricate patterns and vibrant colors, with themes deeply rooted in nature, mythology, and everyday life. The artwork often depicts animals, trees, and folklore, symbolising the Gonds' connection to the natural world. Gond artists use dots and fine lines to create detailed images, and natural pigments from soil, charcoal, and plant extracts are commonly used. This art form is not only decorative but also holds cultural and spiritual significance, preserving the stories and traditions of the Gond people.



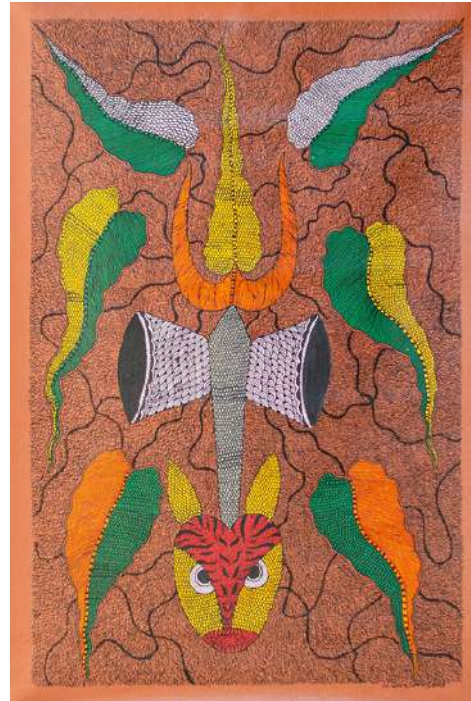
**Tanya**

12" x 17"

Acrylic on canvas

The painting depicts the relationship between tribal communities and the tiger in Gond Art. Central to their tradition is the tiger, the figure of **Baghdev**, revered as a guardian and symbol of power. For generations, their tribe have celebrated the tiger as both protector and living embodiment of the sacred bond between tribal communities and the Mother Nature.

CHA\_003 | **Tiger in Nature**



MPK\_004

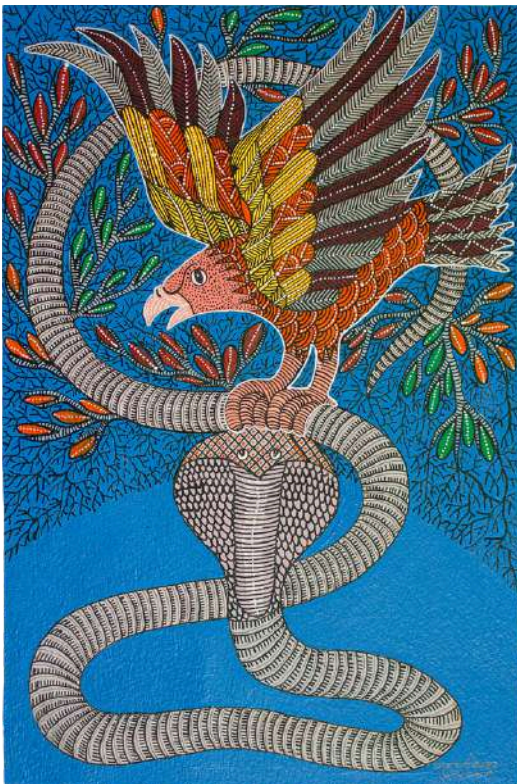
**Badadev**

**Radheshyam Khairwar**

17" x 24"

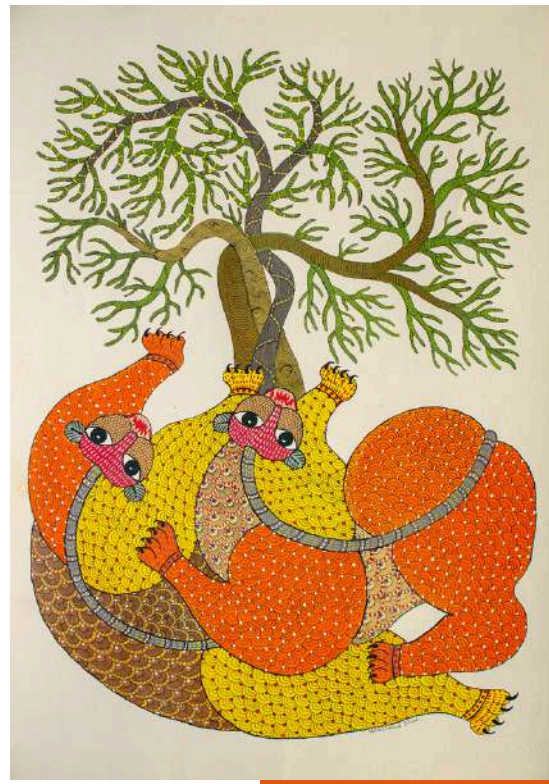
Acrylic on canvas

The painting depicts the Badadev or the holy creator. Badadev is believed to be the creator of the Gond-Pradhan community and it is said that all elements of nature - fire, water, earth, air and sky, were created by him along with Boodhi Dai.



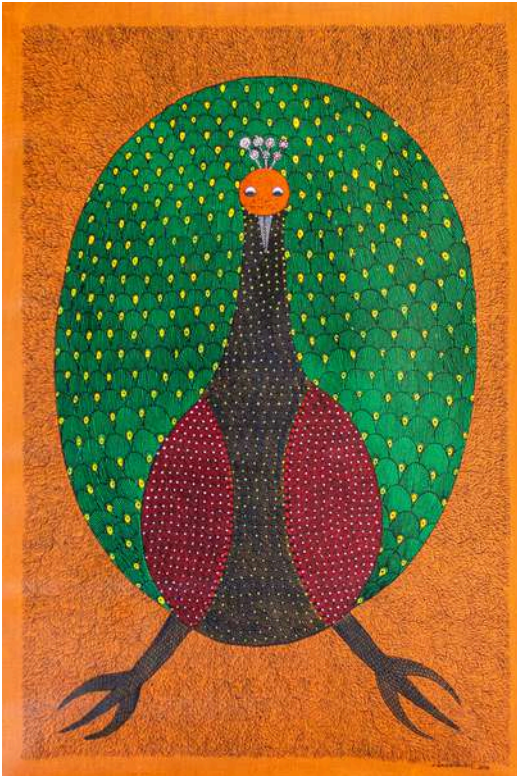
MPK\_029  
**Eagle & Snake**  
**Sanjay Pancheshwar**  
12" x 17"  
Acrylic on paper

Naagdev and Garudraj: In Gond art, Naagdev symbolizes nature's primal forces and fertility, while Garudraj represents strength and vigilance, embodying the balance between earth and sky.



MPP\_001  
**Bagh & Tree**  
**Homchand Panhtilak**  
12" x 17"  
Acrylic on paper

This painting illustrates the tiger around three stages of a tree and highlights the importance of preserving ecology. The 3 seasons depicted in the intertwined branches encourage us to save forests to save wild life.



MPK\_003  
**Mayur**  
**Radheshyam Khairwar**  
17" x 24"  
Acrylic on canvas

The painting is that of a dancing peacock in Gond style with fine dots and vibrant colours.



MPK\_011  
**Tree of Knowledge**  
**Manoj Gadpal**  
24" x 36"  
Acrylic on canvas

The painting depicts a Peepal tree which is considered sacred in Hindu mythology and symbolises wisdom and growth.



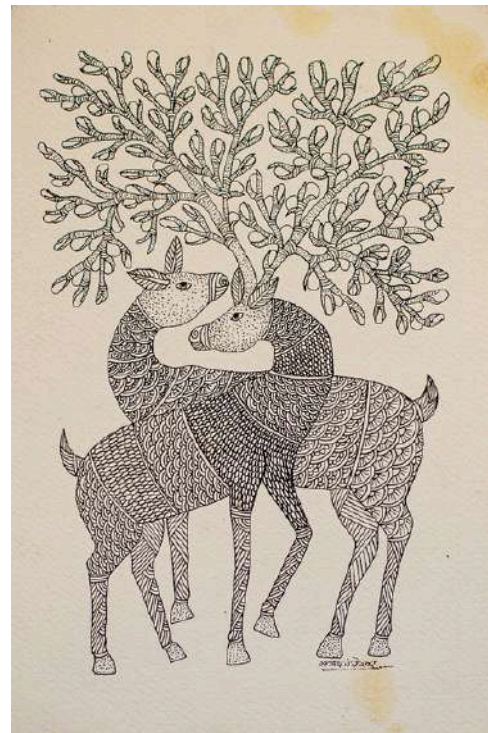
MPK\_018  
**Baiga Couple**

**Sanjay Pancheshwar**

18" x 26"

Acrylic on canvas

The artwork is that of a couple from the Baiga community of Madhya Pradesh.



MPK\_027  
**Deer Couple**

**Sanjay Pancheshwar**

9" x 12"

Acrylic on paper

The meeting of Barasingha in Gond art symbolizes unity, nature's harmony, resilience, and the deep connection between animals and the earth.



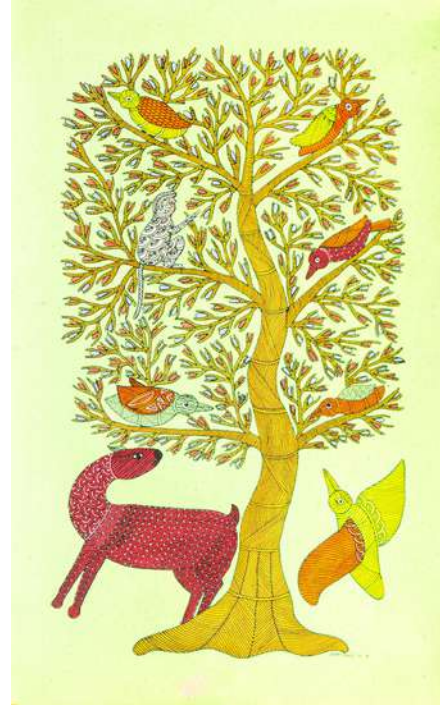
MPK\_020  
**Bird and Tree**

**Sanjay Pancheshwar**

11" x 28"

Acrylic on canvas

The painting shows five gods beneath a sacred tree, symbolizing divine protection, harmony, and the connection between nature and spirituality.



MPK\_019  
**Tree of Knowledge**

**Sanjay Pancheshwar**

15" x 24"

Acrylic on canvas

The painting depicts a deer and birds in a forest, symbolising interdependence between species.



MPK\_024  
**Deer and Tree**

**Sanjay Pancheshwar**

9" x 12"

Acrylic on paper

The painting is that of deer, birds and trees in the forest.



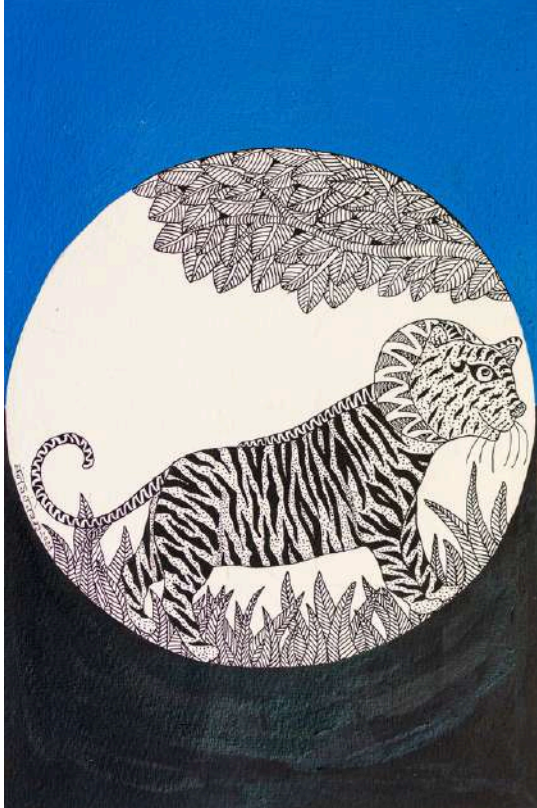
MPK\_026  
**Hathi**

**Sanjay Pancheshwar**

9" x 12"

Acrylic on paper

The painting illustrates the three rivers central to Hindu beliefs, Ganga, Jamuna and Saraswati which have been shown as three interlinked elephants.



MPK\_028  
**Tiger**

**Sanjay Pancheshwar**

12" x 17"

Acrylic on paper

The painting shows a tiger in the forest on a full moon night.



MPK\_025  
**Bird and Tree**

**Sanjay Pancheshwar**

9" x 12"

Acrylic on paper

The painting is that of deer, birds and trees in the forest.



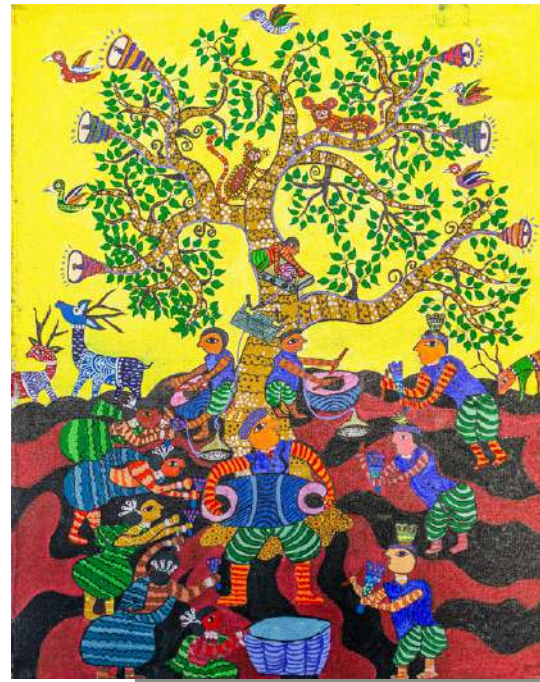
MHN\_003  
**Gondi Tribal Folklore about Harmony with Nature**

**Shrungali Sujit Tembhurkar**

16" x 20"

Poster colour on canvas

The painting depicts the mutual co-existence between different species in a protected landscape. It shows Lord Krishna playing the flute under Tree of Life while deer stand peacefully around him. The artwork has been created in Gond style.



MHN\_002  
**Gondi Tribal Dance with Conservation Appeal**

**Janhvi Balkrushna Shahar**

16" x 20"

Poster colour on canvas

The Gond community is one of the major inhabitant of Nawegaon- Nagzira Tiger Reserve. The painting depicts members of the tribal community celebrating around the 'Tree of Life' which is a central theme in Gond art.



TLK\_002  
**Gond Painting**

**Madavi Rajeshwar**

10" x 14"

Acrylic on canvas

This painting also follows the natural theme and depicts the affinity of Gond community for the environment.



TLK\_006  
**Gond Painting**

**Madavi Rajeshwar**

10" x 14"

Acrylic on canvas

The importance of nature and aquatic life to the Gond community.



**TLK\_007**  
**Gond Painting**

**Madavi Rajeshwar**  
10" x 14"  
Acrylic on canvas

The painting shows a barasingha deer whose antlers branch out to leafy branches depicting the connection between wildlife and forests.



**TLK\_004**  
**Gond Painting**

**Madavi Rajeshwar**  
14" x 10"  
Acrylic on canvas

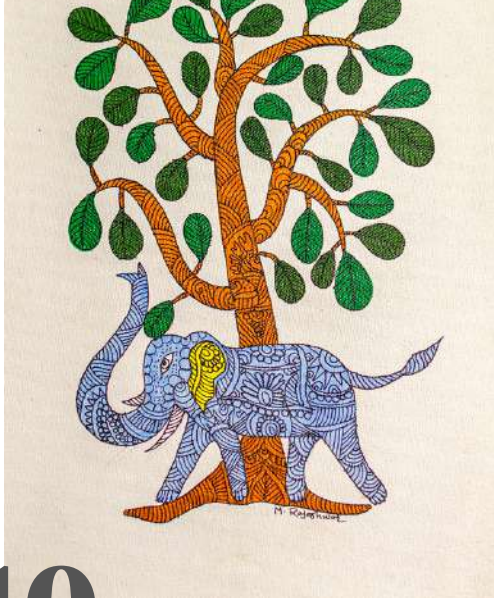
The painting shows two elephants taking shade under the tree of life.



**TLK\_003**  
**Gond Painting**  
**Madavi Rajeshwar**  
8" x 12"  
Acrylic on canvas

The painting shows a barasingha deer whose antlers branch out to leafy branches depicting the connection between wildlife and forests.

**TLK\_008 | Gond Painting**  
**Madavi Rajeshwar**  
10" x 14"  
Acrylic on canvas



The painting shows an elephant taking shade under the tree of life.



**TLK\_005**  
**Gond Painting**  
**Madavi Rajeshwar**  
10" x 14"  
Acrylic on canvas

The painting shows a tiger under the tree of life indicating the relevance of Baghdev and natural elements in Gond culture.

# Saura Art

Saura art is a traditional mural painting style practiced by the Saura tribal community of Odisha, India. Known as ikons or ekons, these paintings carry deep religious significance and are often created to honor deities or mark important occasions. Though similar to Warli art, Saura paintings are unique in their use of intricate human and animal figures arranged in flowing patterns. Natural colors, derived from sources like rice paste and charcoal, are used to depict themes of nature, family, and village life. Saura art reflects the tribe's close connection to their environment and their spiritual heritage.



ODS\_014

**Khairi with Human**  
**Arachand Soren**

18" x 12"

Acrylic on ivory sheet

The painting depicts the adopted daughter of Similipal's director, tigress Khairi who is seen playing with the humans.



ODS\_016

**Similipal people and**  
**Culture**  
**Arachand Soren**

18" x 12"

Acrylic on ivory sheet

The tribal culture in Similipal is characterised by folk tales and terracotta paintings.



ODS\_015

**Athara Deula**  
**Arachand Soren**

18" x 12"

Acrylic on ivory sheet

The painting is an illustration of the puja or worship rituals done at the Athara Deula Temple in Similipal Tiger Reserve. The puja is carried out by the Bathudi community and they chant Jay Badam Badamani during it.

# Sohrai Art

Sohrai art is a traditional mural painting style practiced by tribal communities in Jharkhand, primarily the Munda and Oraon. Typically created by women during harvest festivals and special occasions, these murals are painted on the walls of homes using natural pigments like red, white, black, and ochre. The art features motifs inspired by nature, animals, fertility symbols, and rural life, symbolizing prosperity and cultural continuity. Sohrai art is closely connected to the agricultural cycle and the worship of nature, reflecting the deep bond between the community, their environment, and their ancestral traditions. It also plays a vital role in celebrating seasonal change.



AMK\_001

**Beast of burden**

**Manikchand Mahto**

30" x 26"

Acrylic on white sheet

The painting, made in Sohrai style, depicts a donkey burdened with weight.



AMK\_006

**Gajraj**

**Manikchand Mahto**

11" x 30"

Acrylic on white sheet

One painting depicts elephants and the other one depicts bird and goats together



AMK\_007

**Chidiya**

**Manikchand Mahto**

11" x 30"

Acrylic on white sheet



AMK\_004

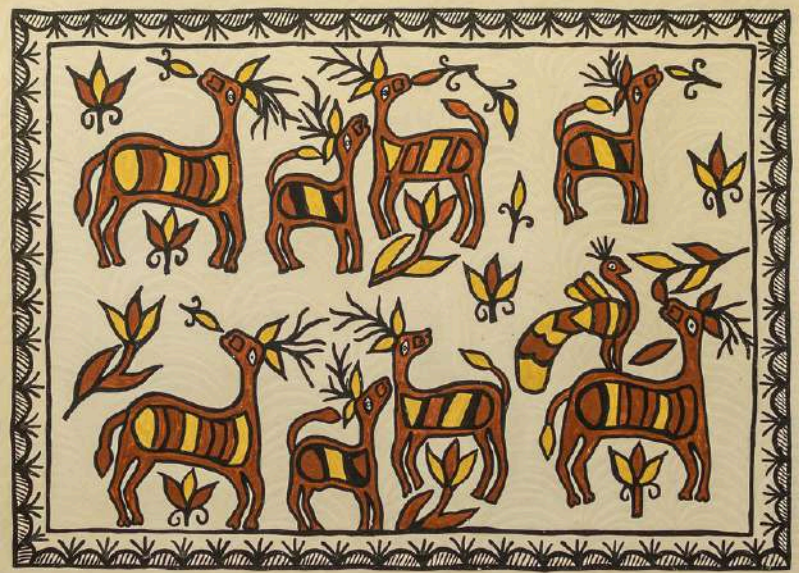
### Ant eater

Manikchand Mahto

30" x 26"

Acrylic on white sheet

The painting depicts an anteater and highlights the importance of prey and predators both in an ecosystem..



AMK\_003

### Goats and Peacock

Manikchand Mahto

30" x 26"

Acrylic on white sheet

The painting shows goats and peacock.



AMK\_002

### Chirpy tree

Manikchand Mahto

30" x 26"

Acrylic on white sheet

The painting depicts a tree covered with chirping birds.



AMK\_005

### Peaceful co-existence

Manikchand Mahto

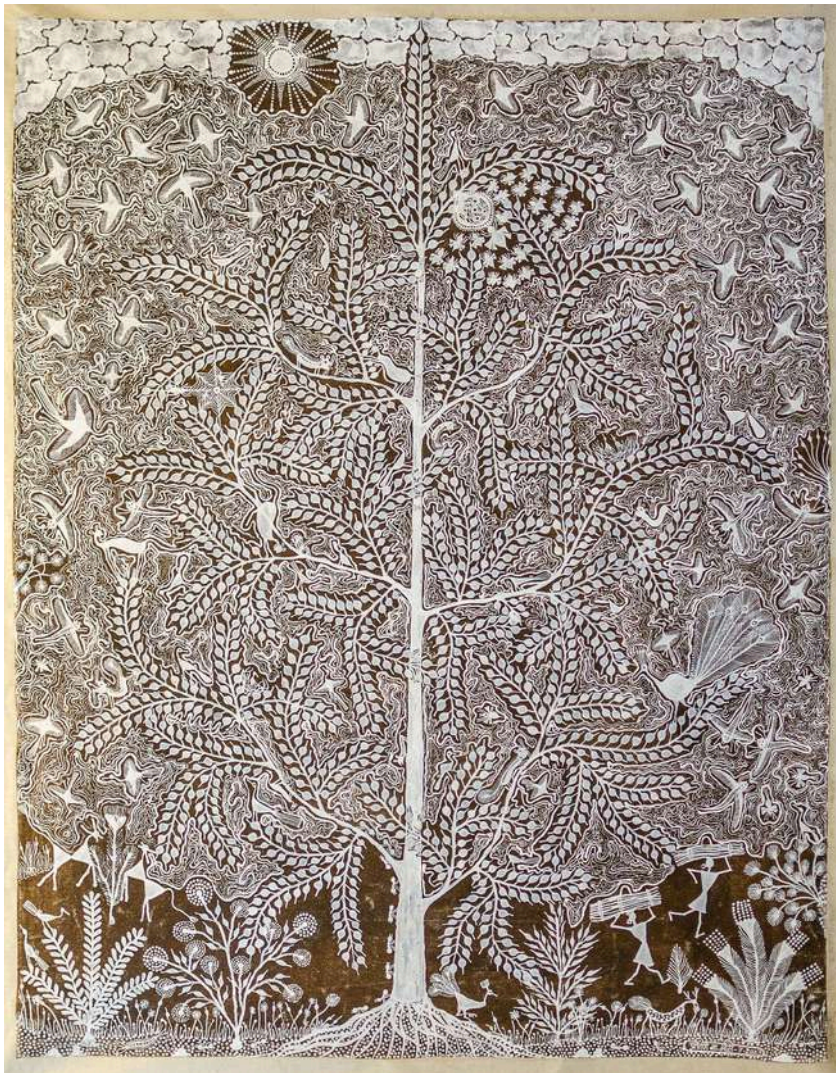
30" x 26"

Acrylic on white sheet

The artwork depicts a multitude of animals co-existing peacefully.

# Warli Art

Warli art is a traditional tribal art form from Maharashtra, India, practiced by the Warli community. It uses simple geometric shapes like circles, triangles, and lines to depict scenes of daily life, nature, and rituals. The art, typically painted on mud walls with white pigment, symbolizes harmony between humans and nature. Warli paintings are minimalist yet expressive, capturing the essence of rural life and cultural heritage.



**Pravin Mhase**

25" x 32"

Acrylic on cowdung treated cotton cloth

The painting depicts the tree of life which symbolises a deep connection between humans and nature, representing the cycle of birth, growth, and renewal.



APM\_005

**Village Life**

**Pravin Mhase**

32" x 25"

Acrylic on cowdung treated cotton cloth

The painting shows the village life in the forest.



AKB\_001

**Day and Night**

**Krushna Bhusare**

30" x 24"

Acrylic on geru mitti treated cotton cloth

The artist has shown the forest at night when, contrary to popular belief that birds and animals do not roam at night. He has tried to convey that forests are safe even at night and hence, more animals are reclaiming their land.



AKB\_007  
**Worship of  
Nature God**

**Krushna Bhusare**

24" x 30"

Acrylic on cowdung treated cotton cloth

The painting depicts the annual worship of the Waghya Dev or the Tiger God by the village head. Tiger is revered in Warli community and the members pray to it for protection on roads and in the forests. Idol of Waghya Dev is kept at the entrance of the forest for good fortune.



AKB\_002  
**Nature**

**Krushna Bhusare**

19" x 26"

Acrylic on cowdung treated cotton cloth

The painting shows ant hills among the vegetation. It refers to the importance of the smallest animal in an ecosystem.



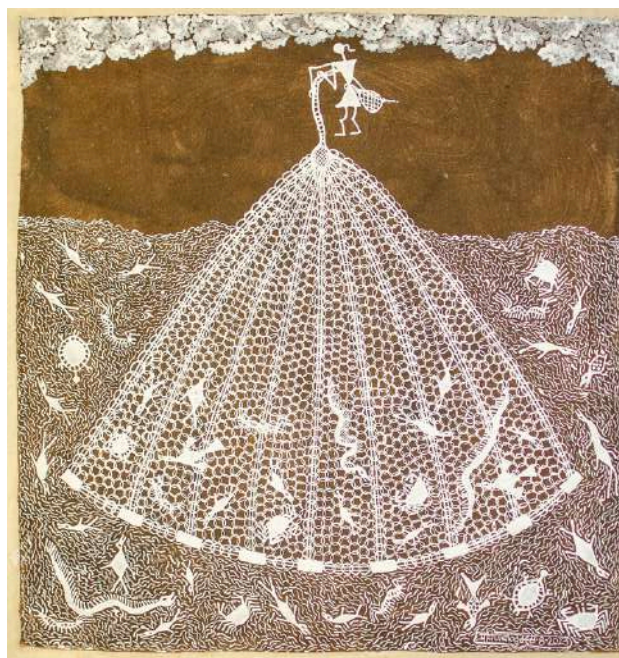
AKB\_006  
**Nature Lover**

**Krushna Bhusare**

24" x 32"

Acrylic on cowdung treated cotton cloth

The artist draws inspiration from the ants and highlights their ability to keep working hard despite any obstacles.



APM\_001  
**Fish net**

**Pravin Mhase**

16" x 17"

Acrylic on cowdung treated cotton cloth

The painting shows a fisherman from the Warli community casting his net for the day.

# Dhokra Art

Dhokra art is an ancient metal casting technique that dates back over 4,000 years and is known for its intricate designs and primitive simplicity. This traditional craft uses the lost wax casting method, where artisans create a wax model of the design, which is then coated with clay to form a mold. Once the mold is heated, the wax melts away, leaving a hollow space that is filled with molten metal, typically brass or bronze. After cooling, the clay mold is broken open to reveal the finished metal sculpture, which is then polished and refined by hand.

Dhokra art is predominantly practiced by tribal communities in the regions of Madhya Pradesh, Chhattisgarh, Jharkhand, Odisha, and West Bengal. The art form is known for its rustic aesthetic and often features depictions of animals, deities, and scenes from daily life. In this particular piece, Lord Nandi, the sacred bull and vehicle (vahana) of Lord Shiva in Hindu mythology, is depicted with remarkable craftsmanship.

## IDV\_001 | **Baitha Nandi Bail Chhota** **Brijlal**

Nandi is not only a symbol of strength and devotion but also represents the eternal protector and companion of Shiva. The use of traditional techniques and symbolic imagery in this Dhokra art piece reflects the rich cultural heritage and spiritual depth of India's tribal communities.



IDV\_003

## **Jaali Nandi Bail** **Brijlal**

The art piece is that of Lord Nandi in lattice or jaali work. The Dhokra technique allows detailed designs to be created on the pieces.



IDV\_002

## **Nandi Ganesh Mundi Bail** **Brijlal**

The art piece is depicting Lord Nandi with the head of Lord Ganesh. It is believed to bring happiness and fortune to one's home.



IDV\_005

**Baitha Nandi Bail**  
**Brijlal**

The art piece features an ornate statue of Lord Nandi in a sitting position.



IDV\_004

**Ghoda Bail**  
**Brijlal**

Intricate designs of Dhokra art are created on the art piece featuring a horse.



IDV\_006

**Kachua**  
**Brijlal**

The art piece is that of a turtle and its complex design is created using the Dhokra technique.



IDV\_007

**Pankhwala Haathi**  
**Brijlal**

The art piece shows an elephant with wings.

# Lohakaam

The art pieces are crafted using Lohakaam, or wrought iron, an ancient metalwork technique practiced by Indian tribal communities. This traditional craft involves heating and shaping iron by hand, inspired by nature and daily tribal life. Common motifs include animals, birds, and forest scenes, reflecting the artisans' deep connection with the environment. In this piece, two deer stand across from each other, symbolizing grace, harmony, and freedom in the wild. The minimalist design captures the essence of wildlife, blending traditional craftsmanship with natural symbolism to showcase the cultural wisdom of tribal communities.



IDV\_008 | **Musician**  
**Hemlata Bhardwaj**

The art pieces are made using Lohakaam or wrought iron method. It is a traditional metalwork art form in India created by communities connected with nature.



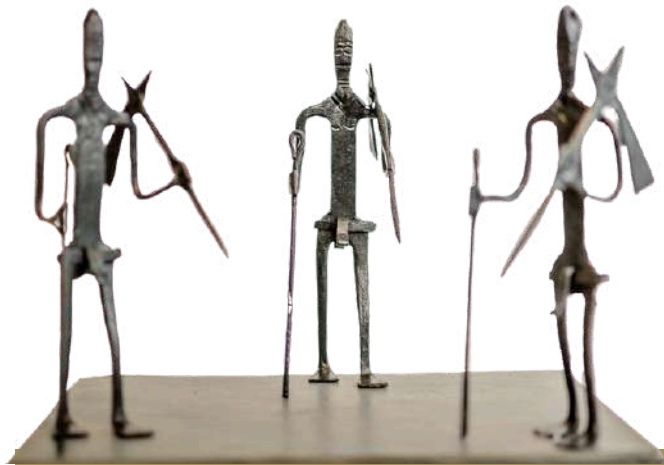
IDV\_009  
**Iron Craft Deer**  
**Hemlata Bhardwaj**

Lohakaam takes inspiration from natural elements like animals and forests as well as daily life of the tribal communities. This art piece depicts two deer standing across from each other.



IDV\_010  
**Iron Deer Tea Light holder**  
**Hemlata Bhardwaj**

The art piece is a tea light holder featuring two deer standing across from each other.



IDV\_014

**Kulhadi waala maadiya  
Hemlata Bhardwaj**

The piece features axe men from the Maria community, made out of wrought iron.



IDV\_013

**Maadin wrought iron  
Hemlata Bhardwaj**

The art piece features women of the Maria tribal community.



IDV\_011

**Horse, Dog Iron Craft  
Hemlata Bhardwaj**

The art piece features a horse and a dog standing across from each other. Inspired by the daily life of tribal communities, this piece could be showcasing the domesticated animals of the communities.



IDV\_012

**Tribal women lamp stand  
Hemlata Bhardwaj**

The art piece is a tea light holder featuring two women.



IDV\_015

**Maadiya wrought iron  
Hemlata Bhardwaj**

The piece features a Maria man in wrought iron.

# Teak Wood Art

Teak wood sculptures created by tribal artisans are known for their intricate craftsmanship and deep cultural significance. These sculptures often depict animals, deities, and scenes from nature, reflecting the tribal communities' deep connection to their environment. Teak, a durable and richly grained wood, is highly valued for its strength and resistance to decay, making it ideal for long-lasting artistic creations. The natural beauty of the wood is enhanced through hand-carved details, showcasing the artisans' skill and tradition. Each sculpture represents not only artistic expression but also a preservation of tribal heritage and a celebration of their relationship with nature.



IDV\_017

**Talwaar**  
**Hemlata Bhardwaj**

The piece is that of a cross sword and is crafted out of teak wood.

IDV\_019

**Phool**  
**Hemlata Bhardwaj**

The piece crafted out of teak wood shows a branch laden with flowers.



IDV\_018

**Maadin lakdi bojha**  
**Hemlata Bhardwaj**

The piece shows a woman labourer from the Maria community carrying wood on her head.



IDV\_016

**Salfi utaarne waala madiya**  
**Hemlata Bhardwaj**

The piece is crafted out of teak wood and is featuring a man from the Maria community climbing a tree for local drink called 'salfi'.





IDV\_025

**Madiya maadin dance tumba waale**  
**Hemlata Bhardwaj**

The piece features a member of the Maria community getting ready for dance.



IDV\_023

**Madiya kaavad waala**

**Hemlata Bhardwaj**

The piece is crafted out of teak wood and features a man from the Maria community carrying a kaavad or a basket with holy water.



IDV\_026

**Madiya maadin dance tumba waale**  
**Hemlata Bhardwaj**

The piece features a member of the Maria community dancing with tumba, a musical instrument.



IDV\_024

**Maadiya maadin dance**  
**Hemlata Bhardwaj**

The piece features a man and a woman from Maria community performing their traditional dance.



IDV\_022

**Madiya Maadin ped ke neeche khade baithe  
Hemlata Bhardwaj**

The piece shows a man and a woman from the Maria community resting under a tree.



IDV\_021

**2 salfi ped shivna ke  
Hemlata Bhardwaj**

The piece, crafted out of teak wood, shows two people from the tribal community collecting local drink, salfi from a tree.



IDV\_020

**Maadin ped ke neeche  
kaanta nikalne waali  
Hemlata Bhardwaj**

The piece shows a woman removing thorns from her feet under a tree.



IDV\_027

**Maadiya dholak waala  
Hemlata Bhardwaj**

The piece features a member of the Maria community dancing with dholak, a musical instrument.

# Contemporary Art



APK\_001

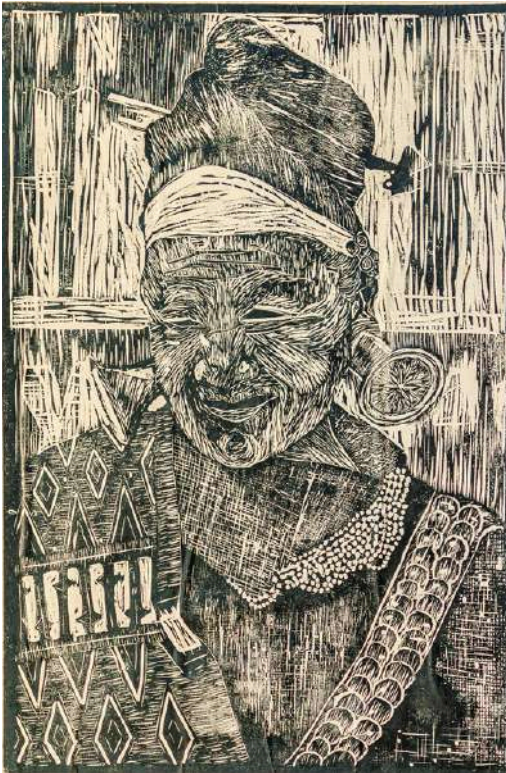
**Kanan**

**Behelti Ama**

32" x 22"

Wood cut

This artwork depicts the interconnectedness of the Mishmi community, one of the major tribal communities of Arunachal Pradesh, with the wildlife of Kanan (meaning 'jungle'). The art highlights the Mishmis' sibling relationship with the tiger. Choosing conservation over conflict with the tiger indicates a peaceful coexistence between humans and wildlife.



APK\_005

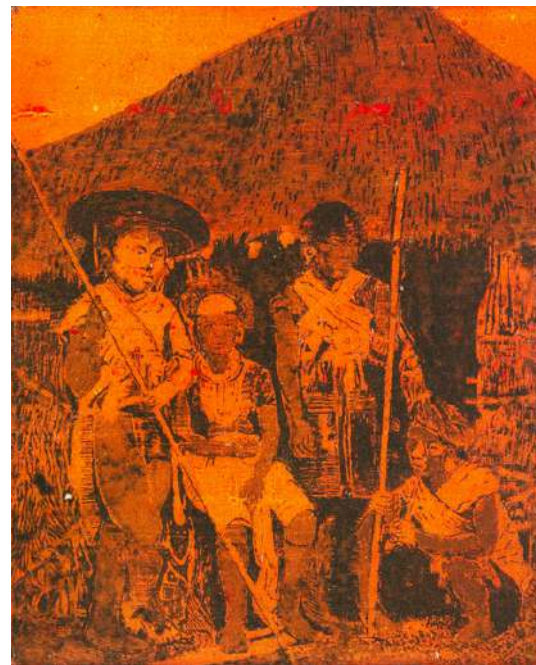
**Mishmi Woman**

**Behelti Ama**

14" x 20"

Wood cut

This artwork showcases the rich cultural heritage of the Mishmi community by depicting elderly women in their traditional costumes.



APK\_004

**Kaman**

**Behelti Ama**

10" x 12"

Etching

This artwork shows the traditional look of the Kaman Mishmis which is a sub-group of the Mishmi tribal community in Arunachal Pradesh.



APK\_003

### Priest Dance

**Behelti Ama**

14" x 10"

Dry point etching

This artwork depicts the rituals practiced by priests of the Kaman and Tawra Mishmi communities of Arunachal Pradesh. It showcases the priest dance performed by the youth during the annual Tamla Du festival.



APK\_002

### Reh festival

**Behelti Ama**

22" x 17"

Dry point etching

The artwork captures the spirit of the Reh Festival which is held in the first week of February, every year. It is a centuries-old celebration of the Idu Mishmi community of Arunachal Pradesh.



CHA\_005

### Tiger and Human

**Ragni Dhurve**

17" x 12"

Acrylic on Canvas

The painting shows a human and tiger sharing the same space under a tree.



CHI\_008

### The Tiger boy Chendru

**Gujral Singh Baghel**

32" x 23"

Acrylic on Canvas

The painting depicts the culture of the Abujhmadia tribal community. It celebrates the relationship between the tiger and local hero, Tiger Boy Chendru known for his courage.



CHA\_004

**Tiger in a landscape with a waterfall**  
**Ragni Dhurve**

17" x 12"

Acrylic on Canvas

The artwork is an illustration of the tiger boy of Bastar region, popularly known as Chandu.



CHI\_004

**Tribal paintings in Tiger Reserve**

**Gourav Naag**

28" x 22"

Poster Color on Paper

Paintings created by artists from communities like Gond, Bhil, Warli depict the biodiversity of the region and their bond with the natural environment.



CHI\_012

**Prakriti Rakshak**

**Gujral Singh Baghel**

24" x 34"

Acrylic on canvas

Tiger is a symbol of strength and courage in tribal culture. The tiger is revered by the tribal communities and this artwork illustrates this reverence.



CHI\_002

**Three Human and Tiger**

**Jatin Korram**

23" x 15"

Poster Colour on paper

The painting illustrates a scene from the daily lives of the tribal communities in the Bastar region, wherein women are picking leaves from a tree to make plates and bowls while a tiger looks on.



CHI\_003

### Tribal paintings in Tiger Reserve

**Gourav Naag**

28" x 22"

Poster Color on Paper

Paintings created by artists from tribal communities in tiger reserves often reflect the deep connection between these communities and wildlife, especially the tiger, which holds cultural and spiritual significance.



CHI\_010

### Haathi aur Adivasi sanskriti

**Gujral Singh Baghel**

29" x 19"

Acrylic on canvas

The paintings highlights the importance of elephants in Buddhism and celebrates the relationship between forests, elephant and tribal communities.



MPK\_038

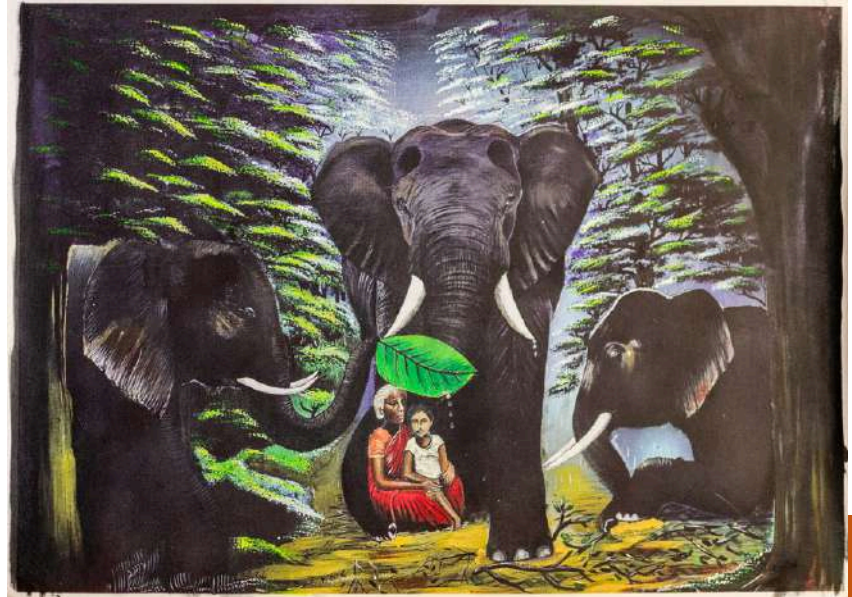
### Forest Queen

**Ashok Sonwani**

12" x 18"

Water Colour on Paper

Women of the Baiga community are the considered the real queens of the jungle. They have an unspoken and unbreakable bond with the wildlife and the forests.



CHI\_009

### Survival

**Gujral Singh Baghel**

32" x 31"

Acrylic on canvas

The artwork is conveying a tale of survival during the Wayanad landslides. It shows a woman and her grandson spending the night under the foot of a wild elephant.



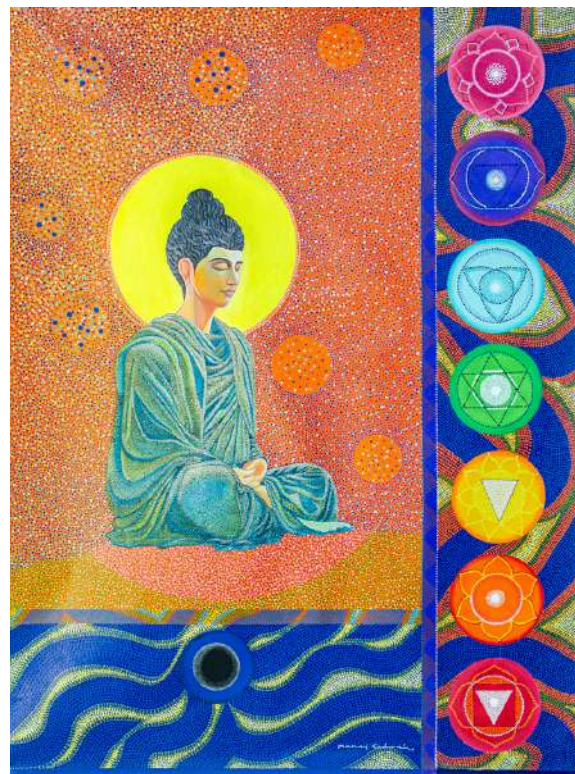
MPK\_040  
**Kanha art**  
**Quite Deer**

**Ashok Sonwani**

18" x 24"

Acrylic on canvas

The painting depicts a deer in Kanha. Deer are known for their expressive eyes.



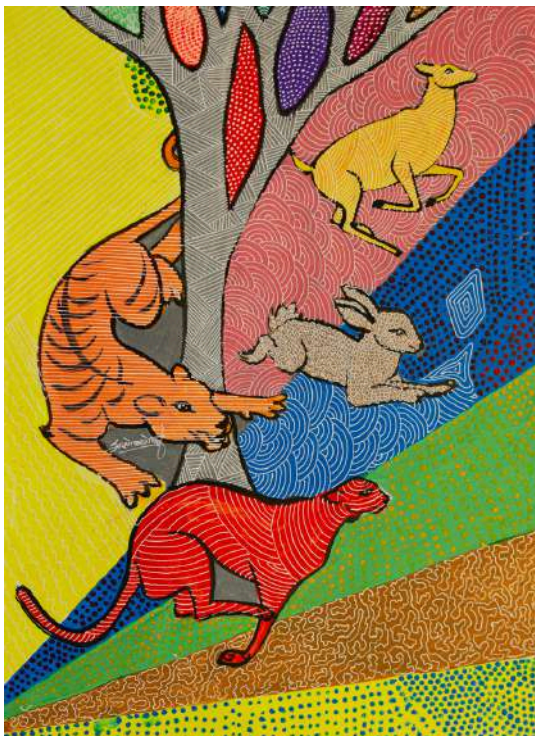
MPK\_010  
**Buddha**

**Manoj Gadpal**

36" x 48"

Acrylic on canvas

The painting conveys the relevance of Buddha and the seven chakras to attain enlightenment.



MPK\_039  
**Rule of Forest**

**Ashok Sonwani**

18" x 24"

Acrylic on canvas

The painting depicts the ferocious nature of the tiger and the fear it instills in the people around it such that they run away and hide when they spot the animal.



MPK\_041  
**Peacock**  
**Ashok Sonwani**  
20" x 29"  
Acrylic on canvas

The painting is an accurate representation of a peacock dancing in the rain. A rainbow appears when it rains and so does the peacock, hence the peacock has been painted in colours of the rainbow to describe the spectacle visually.



MPK\_013

### Bagh

**Manoj Gadpal**

31" x 24"

Acrylic on canvas

The painting depicts Baghdev or the Tiger God created in Gond style.



MHP\_001

### Design of God

**Siddhesh Manohar Yadav**

30" x 24"

Acrylic on canvas

The painting depicts that every creature on Earth has been created by god and Lord Narayana, considered to be the creator, resides in each one of us.



MPS\_002

### Rock Art

**Rahul Chaudhary**

27" x 22"

Poster Color on paper

Satpura Tiger Reserve is home to numerous rock paintings from the prehistoric era. The artist has taken inspiration from these paintings and created the current artwork. The rock paintings of Satpura depict scenes of daily life from the prehistoric times.



ODS\_006

### Synergy of the tribals and forest

**Latasha das**

36" x 24"

Pattachitra

The painting is a depiction of the symbiotic relationship between tribal communities and their natural environment.



MHN\_006  
**Tiger Conservation by Gond Tribes and Daily life of Warli Tribes in Maharashtra**

**Aman Dilip Lade**  
 21" x 30"  
 Acrylic colour on paper

The painting depicts the importance of tiger in Warli and Gond culture. The painting has been created using Gond and Warli motifs.



CHI\_001  
**Tiger in a landscape with a waterfall**  
**Jatin Korram**

22" x 17"  
 Poster Colour on paper

The painting is that of a tiger in a forest near a waterfall, indicating that the tiger is most protected in its natural habitat.



MPP\_002  
**5 Vachan**  
**Rohit Shukla**

17" x 12"  
 Water Colour on Paper

According to local belief, Goddess Banjari Mai is the protector of forests, wildlife and humans. The tiger is the vahana or vehicle of the goddess. In order to travel through the forest, one must take permission from the goddess by offering five stones to her. The goddess then grants the traveller permission and protects them from her tiger in the forest. The painting depicts a person offering prayers to Banjari Mai and the tiger before entering the forest.



MPP\_003  
**Beej Bagh**  
**Rohit Shukla**

12" x 17"  
 Water Colour on Paper

This world is a new plant, one of those two leaves defines mankind, agriculture and industry. To balance this leaf, there is a second leaf on the opposite side which shows biodiversity in the form of forest, wildlife, reptiles and insects. The stem that nourishes both these leaves rests on the seed which keeps the stem stable by spreading its roots deep and reaches the leaves by digging out the water from the earth. This seed is Bagh. This painting depicts the tiger as the foundation of the world.



CHI\_011  
**Adivasi  
Kuldevta**

**Gujral Singh Baghel**

22" x 28"

Pencil on paper

The tiger is worshipped as a family deity in the tribal communities and the painting depicts



CHI\_006  
**Forest**

**Shravan Oyam**

12" x 16"

Pencil and Charcoal on paper

The loud roar of the tiger is an indication of its powerful existence in the otherwise serene forests.



ODS\_007

**A lovely relationship between a human  
and Tiger**

**Anjana Marandi**

22" x 18"

Acrylic on canvas

The painting depicts the true story of Similipal Tiger Reserve's founder-director, Saroj Raj Chowdhury, an officer of the Indian Forest Services and tigress Khairi who was adopted by the officer and brought up as his own daughter.



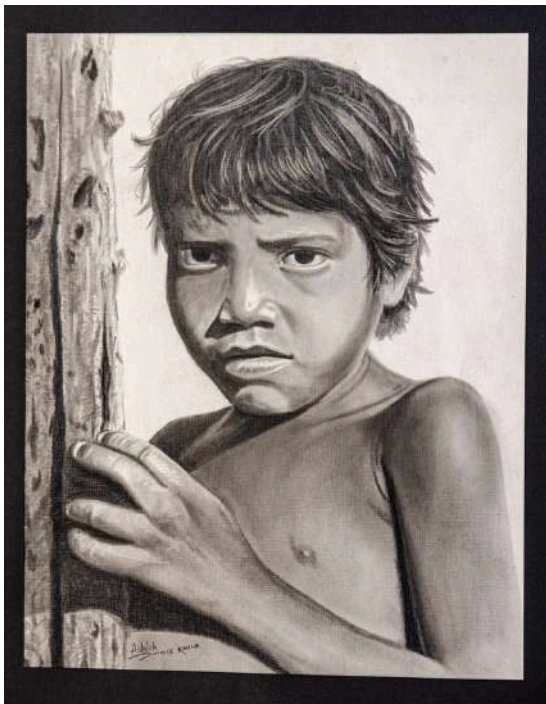
MPK\_033  
**Munna Tiger**

**Ashish Kachwaha**

14" x 18"

Charcoal on paper

The painting features Munna, one of the famous tigers of Kanha.



MPK\_032  
**Bharosa Baiga**

**Ashish Kachwaha**  
13" x 17"  
Charcoal on paper

The painting depicts a child from the Baiga community. Baiga is one of the major tribes residing in Kanha Tiger Reserve.



ODS\_011  
**Tribal Lady**

**Chiranjib sahu**  
12" x 17"  
Water Colour on Handmade paper

The painting features a woman smiling and probably reminiscing about the good times.



MPK\_021  
**Baiga Lady**

**Sanjay Pancheshwar**  
12" x 17"  
Charcoal on paper

The painting depicts a woman from the Baiga community in her traditional costume, jewellery and tattoos. Tattoos are integral to Baiga culture.



MPK\_034  
**Baisa khan**

**Ashish Kachwaha**  
13" x 13"  
Charcoal on paper

The painting is that of Kongi, a young girl from the Baiga community in Kanha.



MHM\_003  
**Gawilgarh**

**Vishwanath J Dahikar**

9" x 12"

Water colour on paper

The painting depicts the Gawilgarh fort in Melghat Tiger Reserve which is a sight to behold during the monsoons.



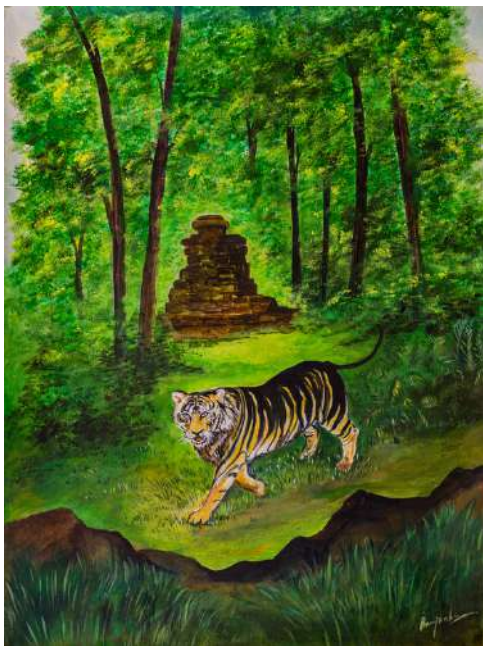
AGJ\_010  
**Royal Entrance**

**Gajanand Singh Tungariya**

25" x 46"

Acrylic on canvas

The painting shows the tiger waiting at the entrance gate to the reserve.



ODS\_008  
**Badaam  
Thakur**

**Barun Raj Kisku**

24" x 36"

Acrylic on paper

The painting depicts the tribal god of Similipal, Badaam Thakur who is revered for his ability to bring happiness and wealth to the communities.



MPK\_008

**Tiger**

**Manoj Gadpal**

48" x 36"

Acrylic on canvas

The painting depicts Baghdev or the Tiger God. Baghdev is revered in the Gond and Baiga communities of Madhya Pradesh.



KPY\_002  
**Tribal Girl**

**Bodhi**  
24" x 36"  
Acrylic on canvas  
—  
Fire wood



ODS\_019  
**Wild**

**Jyotiranjana Mohapatra**  
22" x 36"  
Water Colour on paper

The painting depicts a tiger moving through the jungle with its eyes set on its prey.



KPY\_001  
**Woman**

**Bodhi**  
24" x 36"  
Acrylic on canvas  
—  
Tribal Girl



ODS\_017  
**Pride of Mayurbhanj**

**Arachand Soren**  
32" x 25"  
Acrylic on cowdung

The painting depicts the warriors and the tribal communities of Mayurbhanj, Odisha where Similipal is located.



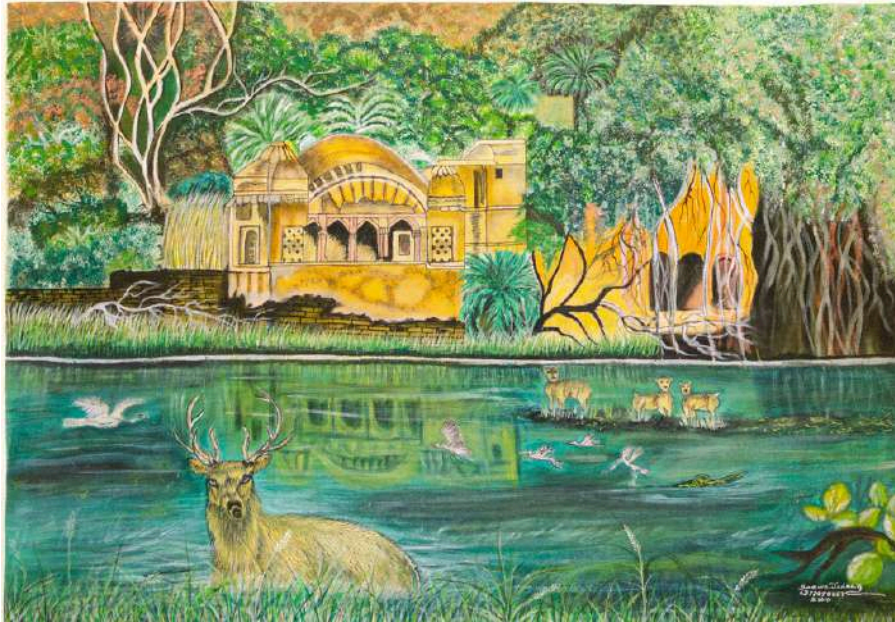
**Bodhi**  
24" x 36"  
Acrylic on canvas

KPY\_004  
**Colourful Tiger**



**Chiranjib sahu**  
18" x 24"  
Water Colour on Handmade paper  
The painting depicts a tiger with motifs of Saura art on either side.

ODS\_012  
**Tiger Face**



ASE\_008  
**Deer at Rajbigh Lake**  
**Seema Jadaon**  
33" x 23"  
Acrylic on canvas

Ranthambore Fort lies at the heart of the Ranthambore Tiger Reserve. The painting shows a deer resting near Rajbigh lake which is located in the fort and is a watering hole for the reserve's wildlife.



**Bodhi**  
24" x 36"  
Acrylic on canvas

KPY\_005  
**Hornbill**



AGJ\_004

**Tiger eyes**

**Gajanand Singh Tungariya**

45" x 24"

Charcoal on paper

The paintings shows the expressive eyes of the tiger.

AGJ\_002

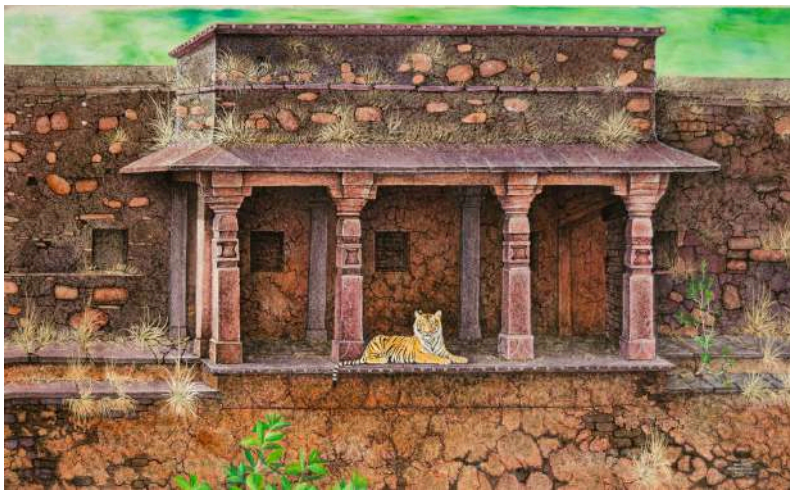
**Tiger eyes in the dark**

**Gajanand Singh Tungariya**

60" x 29"

Acrylic on canvas

The painting depicts eyes of tiger, a nocturnal species, in the dark.



AGJ\_003

**Khemsa kund jharokha**

**Gajanand Singh Tungariya**

60" x 36"

Acrylic on canvas

The painting depicts the Khemsa Kund of Ranthambore Fort in Ranthambore Tiger Reserve.



AGJ\_001

**Village Life**

**Gajanand Singh Tungariya**

48" x 48"

Acrylic on canvas

The art piece is depicting Lord Nandi with the head of Lord Ganesha.

# Price List

Art Style	Unique Code	Name of the Painting / Artwork	Price (INR)
Bhil Art	ARS_001	Pursuit in the Dark Woods	24,500
Bhil Art	ARS_003	Pithora: The Guardian Deity of the Home	1,500
Bhil Art	ASU_001	Connected for survival	10,000
Bhil Art	ASU_002	Feline renaissance	18,000
Bhil Art	ASU_004	Tree of Life	12,000
Gond Art	CHA_003	Tiger in Nature	10,000
Gond Art	MPP_001	Bagh and Tree	5,000
Gond Art	MPK_003	Dancing Peacock	15,000
Gond Art	MPK_004	Badadev	15,000
Gond Art	MPK_011	Tree of Life	15,000
Gond Art	MPK_018	Baiga Couple	7,000
Gond Art	MPK_019	Tree of Knowledge	7,000
Gond Art	MPK_020	Bird and Tree	10,000
Gond Art	MPK_024	Deer and Tree	2,000
Gond Art	MPK_025	Bird and Tree	2,000
Gond Art	MPK_026	Hathi	2,000
Gond Art	MPK_027	Deer couple	2,000
Gond Art	MPK_028	Tiger	4,000
Gond Art	MPK_029	Eagle and Snake	4,000
Gond Art	MHN_002	Gond tribal dance with an appeal for conservation	10,000
Gond Art	MHN_003	Gondi Tribal Folklore in Harmony with Nature	10,000
Gond Art	TLK_002	Tribal Gond Painting	4,000
Gond Art	TLK_003	Tribal Gond Painting	3,500
Gond Art	TLK_004	Tribal Gond Painting	4,000
Gond Art	TLK_005	Tribal Gond Painting	3,500
Gond Art	TLK_006	Tribal Gond Painting	4,000
Gond Art	TLK_007	Tribal Gond Painting	4,000
Gond Art	TLK_008	Tribal Gond Painting	4,000
Saura Art	ODS_014	Khairi with Human	7,000
Saura Art	ODS_015	Athara Deula	7,000
Saura Art	ODS_016	Similipal people and Culture	7,000
Sohrai Art	AMK_001	Beast of burden	2,500
Sohrai Art	AMK_002	Chirpy tree	2,500
Sohrai Art	AMK_003	Goats and Peacock	2,500

Art Style	Unique Code	Name of the Painting / Artwork	Price (INR)
Sohrai Art	AMK_004	Anteater	2,500
Sohrai Art	AMK_005	Peaceful co-existence	2,500
Sohrai Art	AMK_006	Gajraj	1,500
Sohrai Art	AMK_007	Chidiya	1,500
Warli Art	AKB_001	Day and Night	7,000
Warli Art	AKB_002	Nature	10,500
Warli Art	AKB_006	Nature Lover	10,500
Warli Art	AKB_007	Worship of Nature God	12,500
Warli Art	APM_001	Fish net	8,500
Warli Art	APM_004	Tree of Life	10,500
Warli Art	APM_005	Village Life	13,000
Dhokra Art	IDV_001	Baitha Nandi Bail Chhota	6,000
Dhokra Art	IDV_002	Nandi Ganesh Mundi Bail	18,000
Dhokra Art	IDV_003	Jaali Nandi Bail	19,200
Dhokra Art	IDV_004	Ghoda Bail	28,800
Dhokra Art	IDV_005	Baitha Nandi Bail	18,000
Dhokra Art	IDV_006	Kachua	3,400
Dhokra Art	IDV_007	Pankhwala Haathi	10,000
Lohakaam	IDV_008	Musician	4,000
Lohakaam	IDV_009	Iron Craft Deer	6,400
Lohakaam	IDV_010	Iron Deer Tea Light holder	4,000
Lohakaam	IDV_011	Horse, Dog Iron Craft	1,600
Lohakaam	IDV_012	Tribal women lamp stand	6,400
Lohakaam	IDV_013	Maadin wrought iron	10,000
Lohakaam	IDV_014	Kulhadi waala maadiya	4,000
Lohakaam	IDV_015	Maadiya wrought iron	10,000
Teak Wood Art	IDV_016	Salfi utaarne waala madiya	18,000
Teak Wood Art	IDV_017	Talwaar	12,000
Teak Wood Art	IDV_018	Maadin lakdi bojha	4,000
Teak Wood Art	IDV_019	Phool	2,800
Teak Wood Art	IDV_020	Maadin ped ke neeche kaanta nikalne waali	6,000
Teak Wood Art	IDV_021	2 salfi ped shivna ke	6,000
Teak Wood Art	IDV_022	Madiya Maadin ped ke neeche khade baithe	8,000
Teak Wood Art	IDV_023	Madiya kaavad waala	2,800
Teak Wood Art	IDV_024	Maadiya maadin dance	16,000
Teak Wood Art	IDV_025	Madiya maadin dance tumba waale	10,000
Teak Wood Art	IDV_026	Madiya maadin dance tumba waale	10,000

Art Style	Unique Code	Name of the Painting / Artwork	Price (INR)
Teak Wood Art	IDV_027	Maadiya dholak waala	2,800
Contemporary Art	CHA_004	Tiger in a landscape with a waterfall	10,000
Contemporary Art	CHA_005	Tiger and Human	10,000
Contemporary Art	CHI_002	Three Human and Tiger	20,000
Contemporary Art	CHI_003	Tribal paintings in Tiger Reserve	20,000
Contemporary Art	CHI_004	Tribal paintings in Tiger Reserve	20,000
Contemporary Art	CHI_006	Forest	10,000
Contemporary Art	CHI_008	The Tiger boy Chendru	9,000
Contemporary Art	CHI_009	Survival	9,000
Contemporary Art	CHI_010	Haathi aur Adivasi sanskriti	9,000
Contemporary Art	CHI_011	Adivasi Kuldevta	10,000
Contemporary Art	CHI_012	Prakriti Rakshak	12,500
Contemporary Art	MPP_003	Beej Bagh	3,500
Contemporary Art	MPK_008	Tiger	50,000
Contemporary Art	MPK_013	Bagh	15,000
Contemporary Art	MPK_021	Baiga Lady	5,000
Contemporary Art	MPK_032	Bharosa Baiga	5,000
Contemporary Art	MPK_033	Munna Tiger	3,000
Contemporary Art	MPK_034	Baisa khan	5,000
Contemporary Art	MPK_038	Forest Queen	5,000
Contemporary Art	MPK_039	Rule of Forest	8,000
Contemporary Art	MPS_002	Rock Art	7,000
Contemporary Art	MHN_006	Tiger Conservation by Gond Tribes and Daily life of Warli Tribes in Maharashtra	15,000
Contemporary Art	ODS_006	Synergy of the tribals and forest	23,000
Contemporary Art	ODS_008	Badaam Thakur	15,000
Contemporary Art	ODS_012	Tiger Face	17,000
Contemporary Art	ODS_019	Wild	24,000
Contemporary Art	APK_001	Kanan	20,000
Contemporary Art	APK_002	Reh festival	8,000
Contemporary Art	APK_003	Priest Dance	3,500
Contemporary Art	APK_004	Kaman	4,000
Contemporary Art	APK_005	Mishmi Woman	7,000
Contemporary Art	CHI_001	Tiger in a landscape with a waterfall	20,000
Contemporary Art	MPP_002	5 Vachan	3,500
Contemporary Art	MPK_010	Buddha	70,000
Contemporary Art	MPK_040	Kanha art quite Deer	12,000
Contemporary Art	MPK_041	Peacock	12,000

Art Style	Unique Code	Name of the Painting / Artwork	Price (INR)
Contemporary Art	MHM_003	Gawilgarh	3,000
Contemporary Art	MHP_001	Design of God	35,000
Contemporary Art	ODS_007	A lovely relationship between a human and Tiger	25,000
Contemporary Art	ODS_011	Tribal Lady	9,000
Contemporary Art	ASE_008	Deer at Rajbagh Lake	15,000
Contemporary Art	AGJ_001	Tiger flying with its cub	48,000
Contemporary Art	AGJ_002	Tiger eyes in the dark	35,000
Contemporary Art	AGJ_003	Khemsakund jharokha	45,000
Contemporary Art	AGJ_004	Tiger eyes	22,000
Contemporary Art	AGJ_010	Royal Entrance	23,000
Contemporary Art	KPY_001	Woman	10,000
Contemporary Art	KPY_002	Tribal Girl	15,000
Contemporary Art	KPY_004	Colourful Tiger	8,000
Contemporary Art	KPY_005	Hornbill	8,000
Contemporary Art	ODS_017	Pride of Mayurbhanj	16,000

## Purchase Procedure

If you wish to purchase any art work, kindly send an email to us at [admin@sankala.org](mailto:admin@sankala.org) with the following information

- Unique code of the art work
- Details about the buyer – Name, Contact no., Address for delivery

We aim to ensure that payments go directly to the artists, with Sankala Foundation acting as a facilitator. Upon receiving order placement email, we will provide the artist's payment details, and your order will be confirmed upon successful payment.

Please send us the transaction details along with proof of payment for confirmation. After that, the artwork will be carefully packaged and sent to you.

## Your Encouragement, Their Empowerment



# Sankala Foundation

The Sankala Foundation is a Delhi-based non-profit organisation focused on expanding knowledge and fostering dialogue on climate, sustainability, sustainable development goals, and conservation of natural resources. Committed to mitigating the impacts of climate change, particularly on vulnerable communities, Sankala engages in research, training, advocacy, education, and knowledge-sharing.

The foundation is dedicated to protecting wildlife and their habitats, recognizing their vital role in both ecological balance and sustainable livelihoods of forest-dependent communities. Through strategic partnerships and interventions, Sankala aims to create lasting positive changes for the protection of environment and nature.



**Sankala Foundation**  
**Sankala Centre for Climate and Sustainability**

B 414 - 416, Somdutt Chambers 1,  
Bhikaji Cama Place,  
New Delhi – 110 066

**Email: [admin@sankala.org](mailto:admin@sankala.org)**